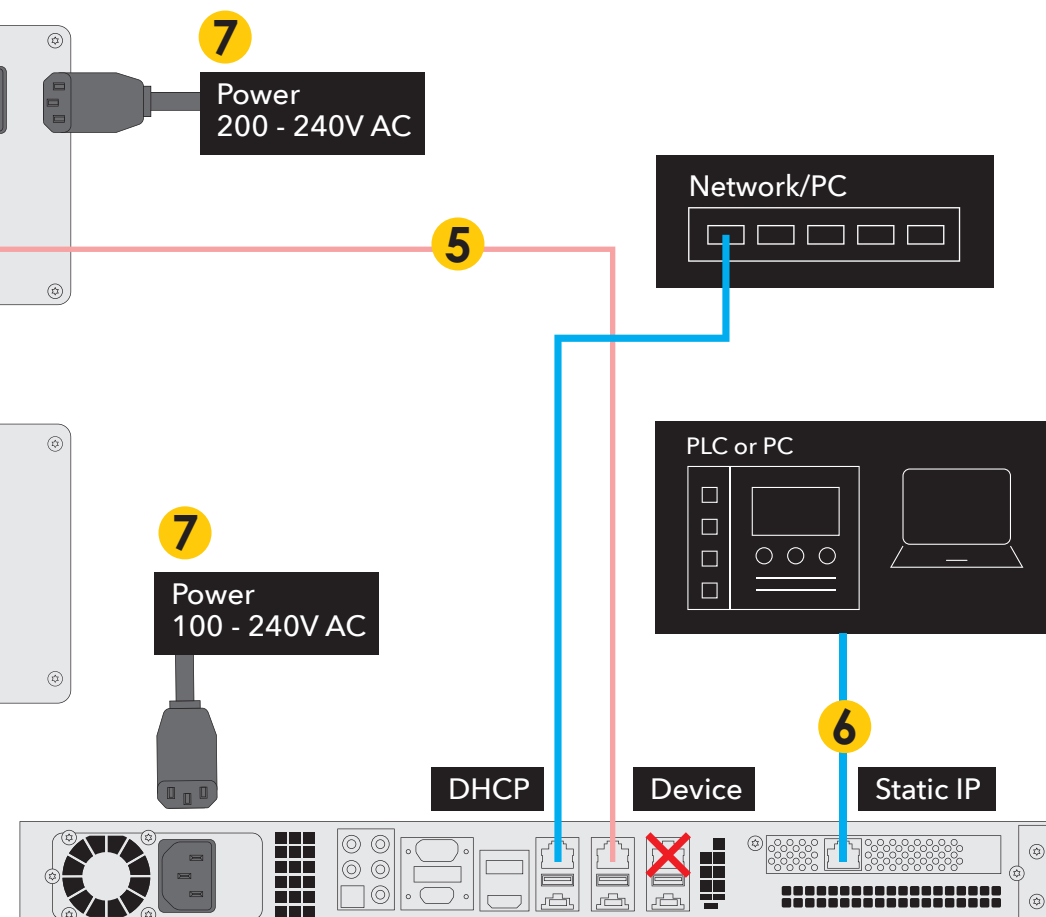


Connect the cables according to the ascending number

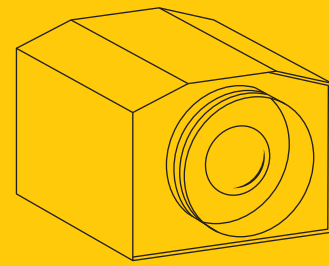
Diagram illustrating the control unit interface. It features a large grey rectangular display area on the left and a circular 'on/off' button on the right. The text 'CONTROL UNIT' is located in the top right corner, and the 'coatmaster' logo is in the bottom right corner.

Diagram of the rear panel of the device showing connection points for a safety plug, two sensors, a pressure sensor, a power switch, and a power cable. Numbered callouts 1, 2, and 7 point to the pressure sensor, safety plug, and power cable respectively.

Measurement server



- 1** Connection cable control-rack to cooling unit. XLR-6 Pole, Power (24V) and Water-Sensors.
- 2** Safety Plug. KLR, 4 Pole, Safety circuit or jumper-plug must be connected.
- 3** Cable bundle to the measuring head. Harting connectors, Hi-voltage and signals.
- 4** Water tubes to the measuring head. Self-closing connectors. Note nbr. 1 and nbr. 2 on the tubes and the connectors on the cooling unit and the head.
- 5** RJ45 connector from the control Rack to the Server. Device internal communication.
- 6** Ethernet connection to PC, PLC or Network. The right (from the back of the server) has a static IP-address, the left (from the back of the server) is on DHCP. The Ethernet Interface of the PC (PLC) must be in the same subnet (192.168.1.xxx).
- 7** Power plugs. 200-240 V AC.



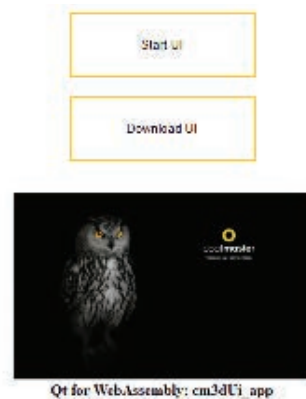
Connection to the UI

- 1 Make sure the coatmaster 3D is running and is connected by Ethernet with the PC and the PC is in the same subnet (192.168.1.xxx) as the coatmaster 3D.
- 2 Open a web browser (Edge, Chrome, Brave,...) and type the IP-Adress of the coatmaster followed by the port 8082 in the URL Line of the browser RJ45 connector from the control unit to the flash generator. Device internal communication. Two are required per Flash Generator rack (2 lamps).

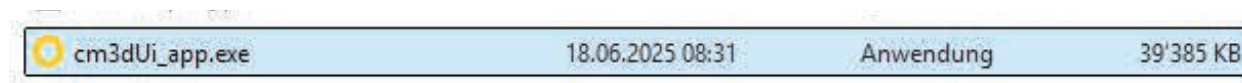
192.168.1.185:8082



- 3 Download the UI




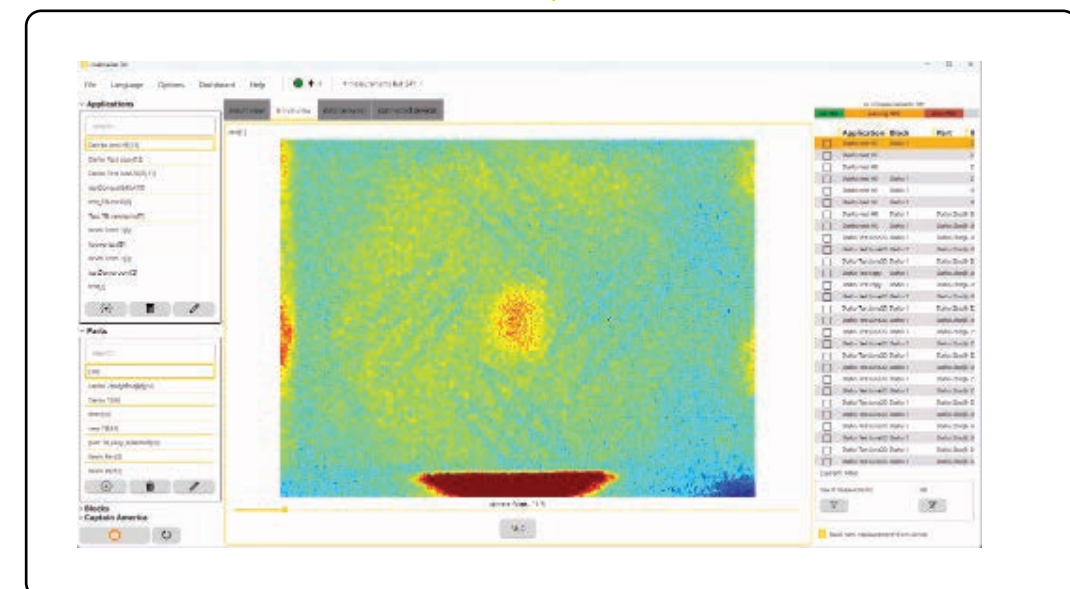
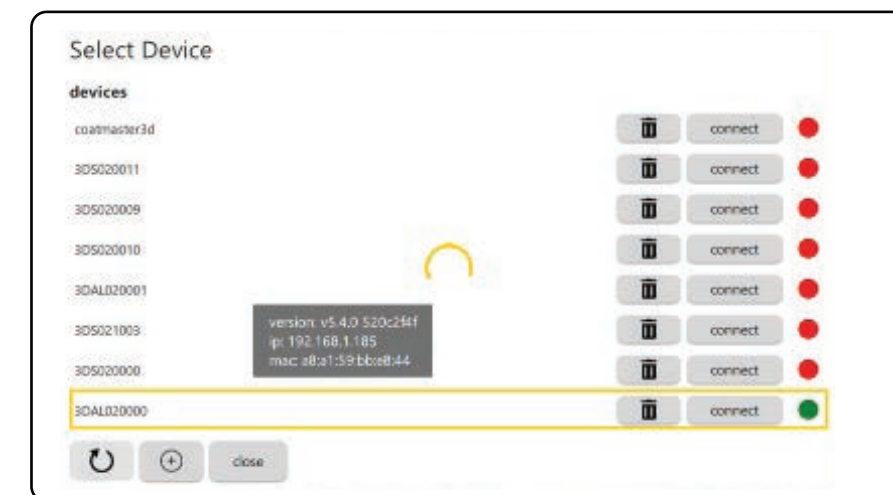
- 4 Extract the downloaded File "cm3dUi_app.zip" into a folder and start the app "cm3dUi_app.exe" Ethernet connection to PC, PLC or Network



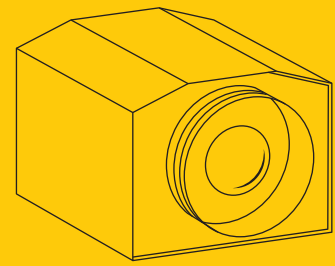
Connect the UI with the coatmaster 3D

Connect the device with the UI "File / Devices" .

If the device doesn't appear connect by IP address  (the static IP-address is printed on a sticker on the device). If you can't connect the device, please check the connection (IP address, Subnet, Plugs).



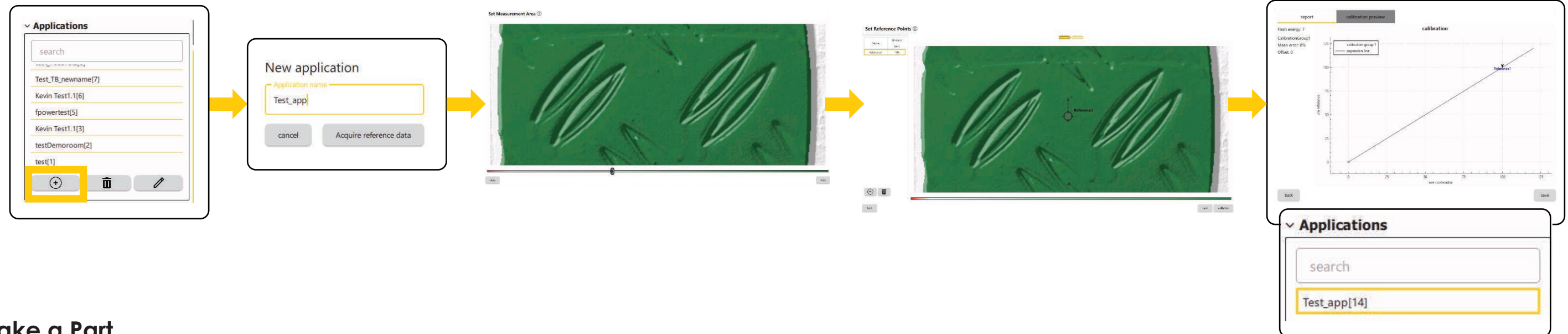
coatmaster 3D Inline Quick start guide



Make an Application

Make sure you are logged in as standard "Options / Settings / standard", PW: "admino041"

- 1 Make a new application
- 2 Set a name
- 3 Set the threshold
- 4 Set in the minimum two Reference Point
- 5 Calibrate and save



Make a Part

Make a measurement with the Application you would like to measure first.

- 1 Make a new part
- 2 Set a name
- 3 Right mouse click / add ROI
- 4 Set the Roi in the right shape and set the tolerance
- 5 You can set advanced options

