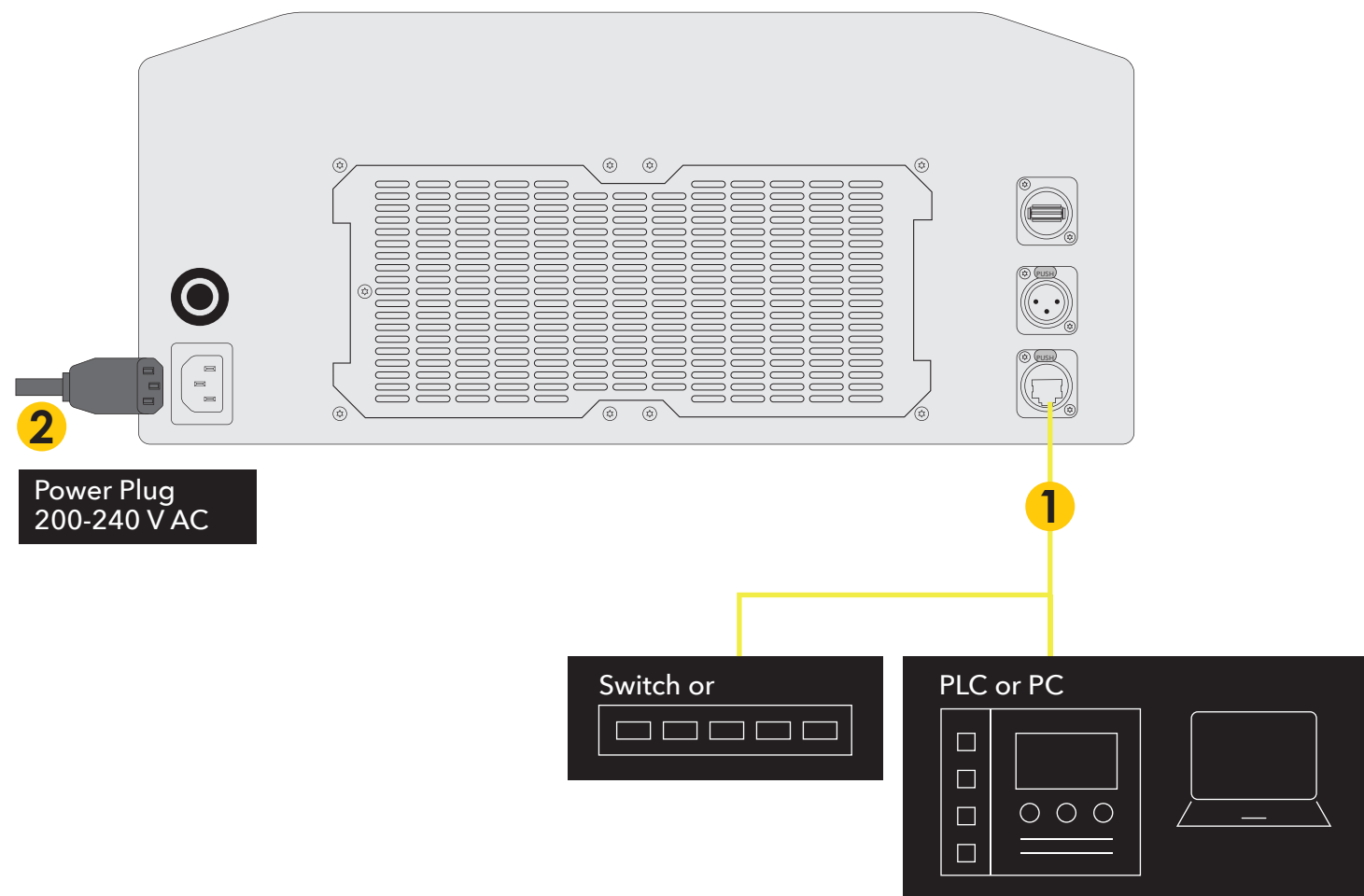


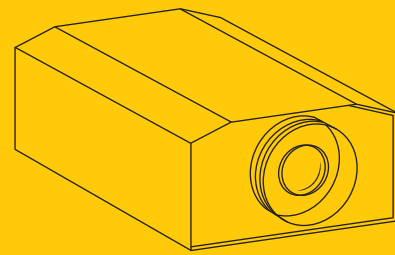
## Connections for coatmaster 3D Atline

Connect the cables according to the ascending number



**1** Ethernet connection to PC, PLC or Network. The Ethernet Interface of the PC (PLC) must be in the same subnet (192.168.1.xxx) as the coatmaster 3D Atline is.

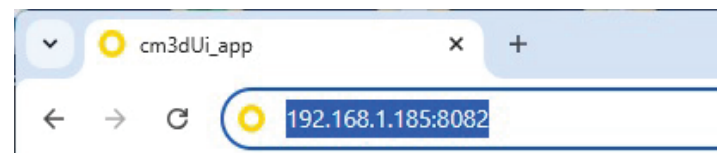
**2** Power Plug. 200-240 V AC



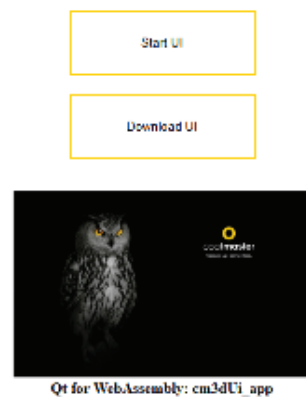
## Connection to the UI

- 1 Make sure the coatmaster 3D is running and is connected by Ethernet with the PC and the PC is in the same subnet (192.168.1.xxx) as the coatmaster 3D.
- 2 Open a web browser (Edge, Chrome, Brave,...) and type the IP-Adress of the coatmaster followed by the port 8082 in the URL Line of the browser RJ45 connector from the control unit to the flash generator. Device internal communication. Two are required per Flash Generator rack (2 lamps).


192.168.1.185:8082



- 3 Download the UI




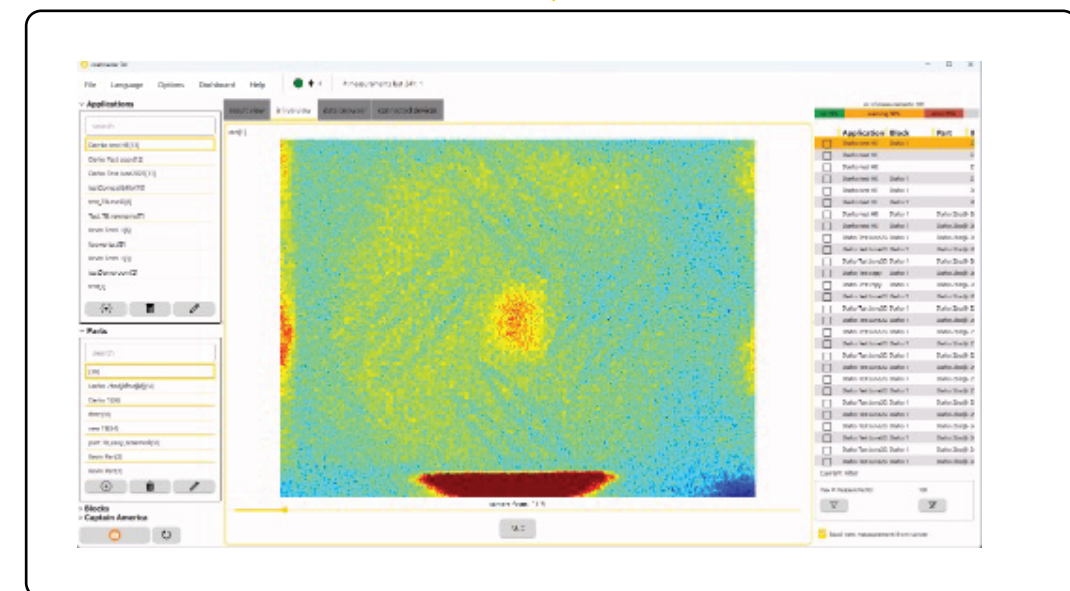
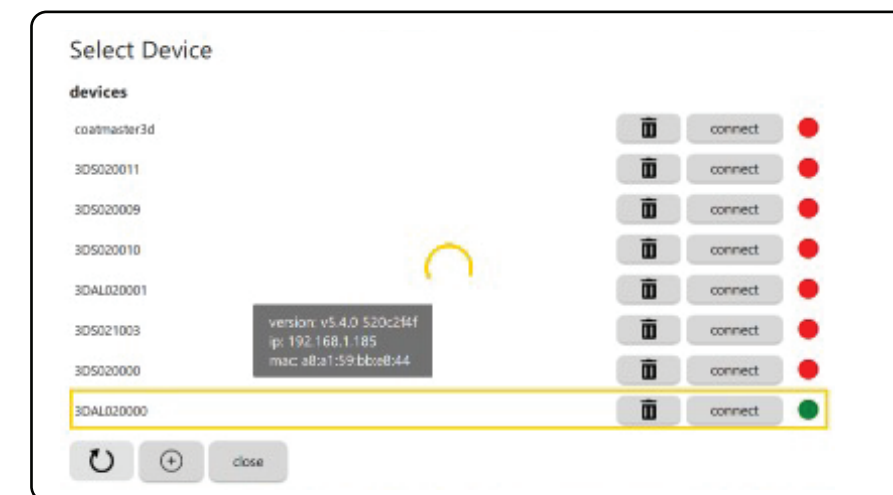
- 4 Extract the downloaded File "cm3dUi\_app.zip" into a folder and start the app "cm3dUi\_app.exe" Ethernet connection to PC, PLC or Network

 cm3dUi_app.exe	18.06.2025 08:31	Anwendung	39'385 KB
--	------------------	-----------	-----------

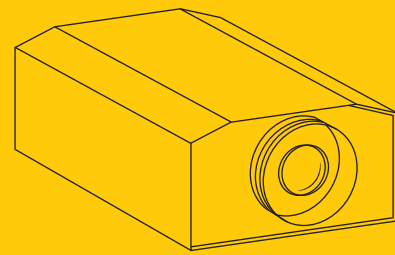
## Connect the UI with the coatmaster 3D

Connect the device with the UI "File / Devices"  .

If the device doesn't appear connect by IP address  (the static IP-address is printed on a sticker on the device). If you can't connect the device, please check the connection (IP address, Subnet, Plugs).



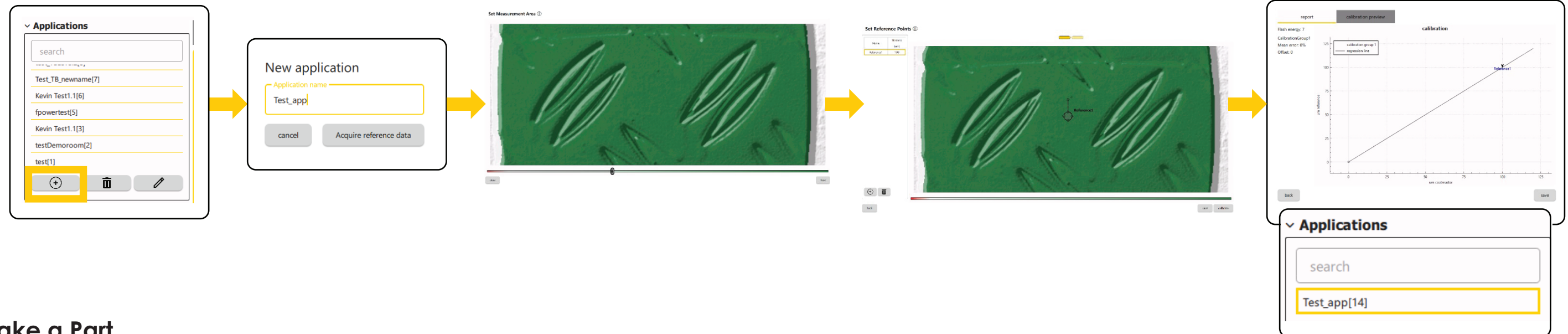
# coatmaster 3D Atline Quick start guide



## Make an Application

Make sure you are logged in as standard "Options / Settings / standard", PW: "admino041"

- 1 Make a new application
- 2 Set a name
- 3 Set the threshold
- 4 Set in the minimum two Reference Point
- 5 Calibrate and save



## Make a Part

Make a measurement with the Application you would like to measure first.

- 1 Make a new part
- 2 Set a name
- 3 Right mouse click / add ROI
- 4 Set the Roi in the right shape and set the tolerance
- 5 You can set advanced options

