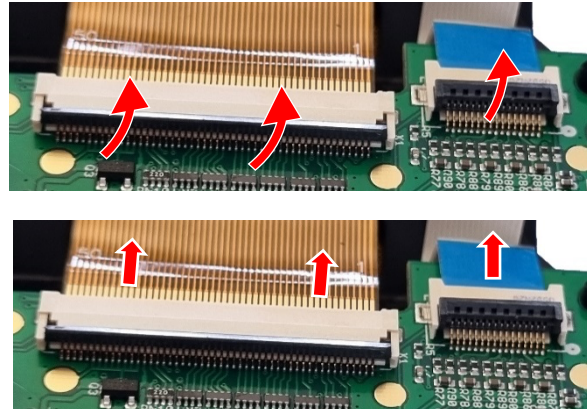
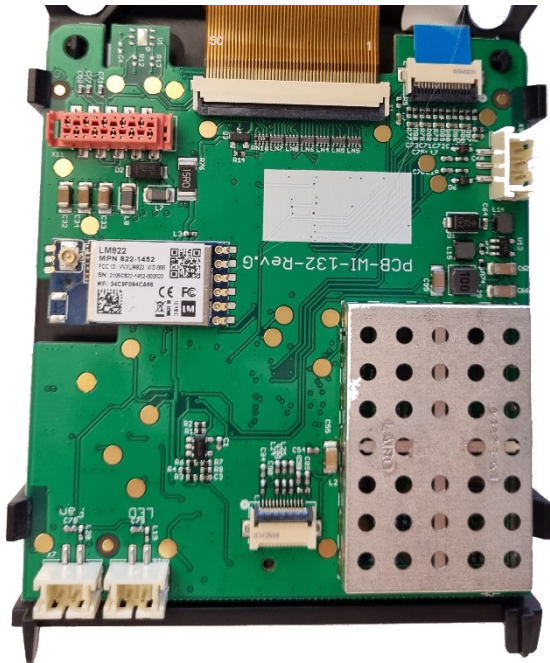


4. Replace DAQ / Toradex

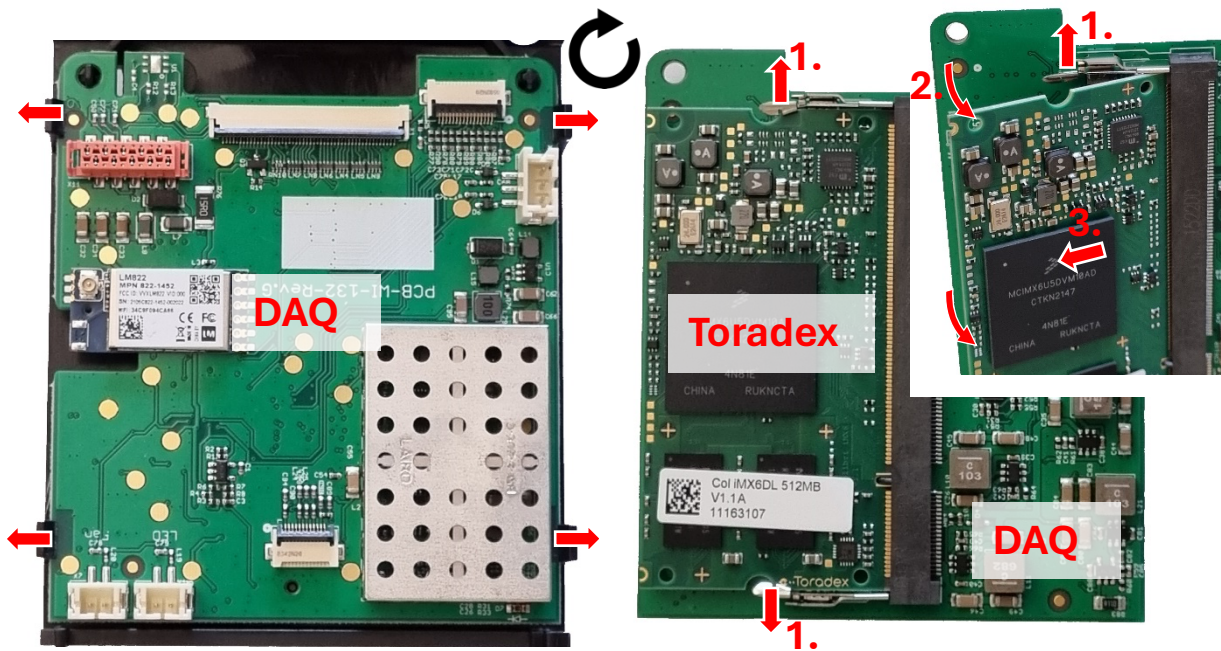
Disassembly the DAQ-Toradex / DAQ-Toradex demontieren

Unlock the two connectors / die beiden Steckverbinder lösen



Release PCB locks / PCB Verriegelungen lösen

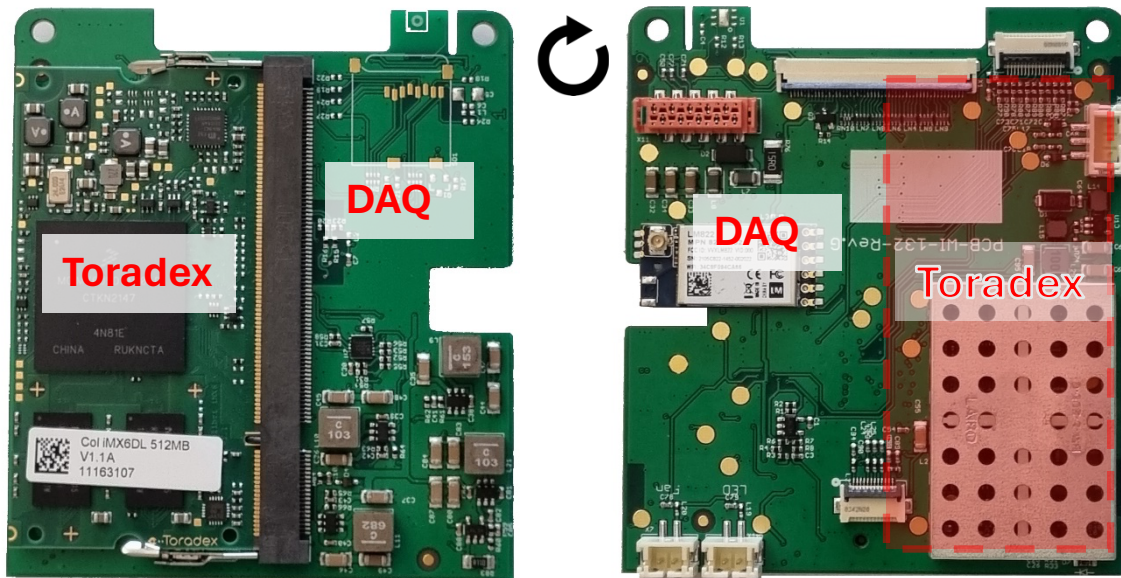
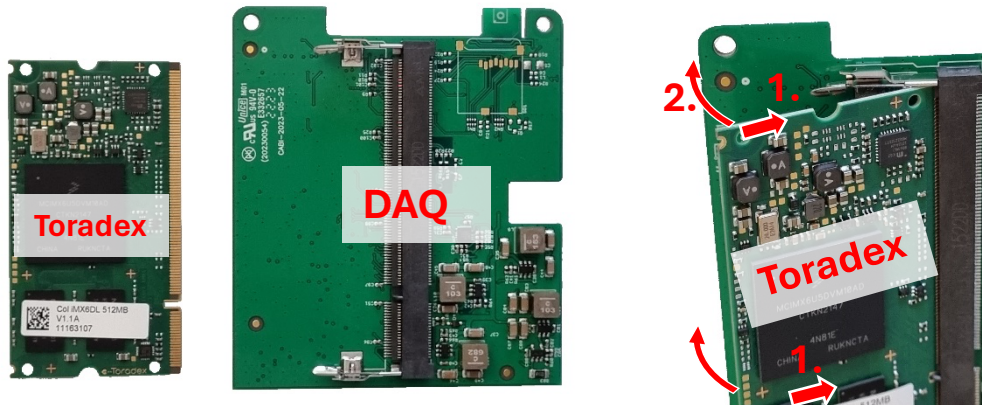
Unlock Toradex / Verriegelung Toradex öffnen



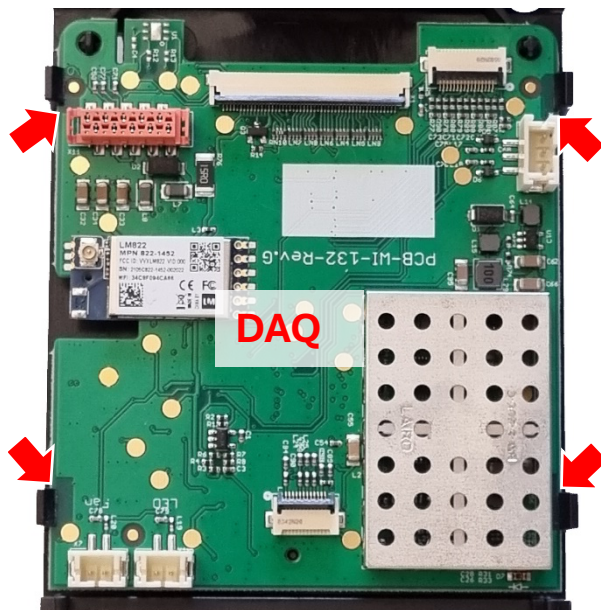
4. Replace DAQ / Toradex

Assembly the DAQ-Toradex/ DAQ-Toradex montieren

clip Toradex into the DAQ / Toradex in DAQ einclipen



push DAQ into the latch / DAQ in die Verriegelungen drücken



plug in both cable and lock / beide Kabel einstecken und verriegeln

