

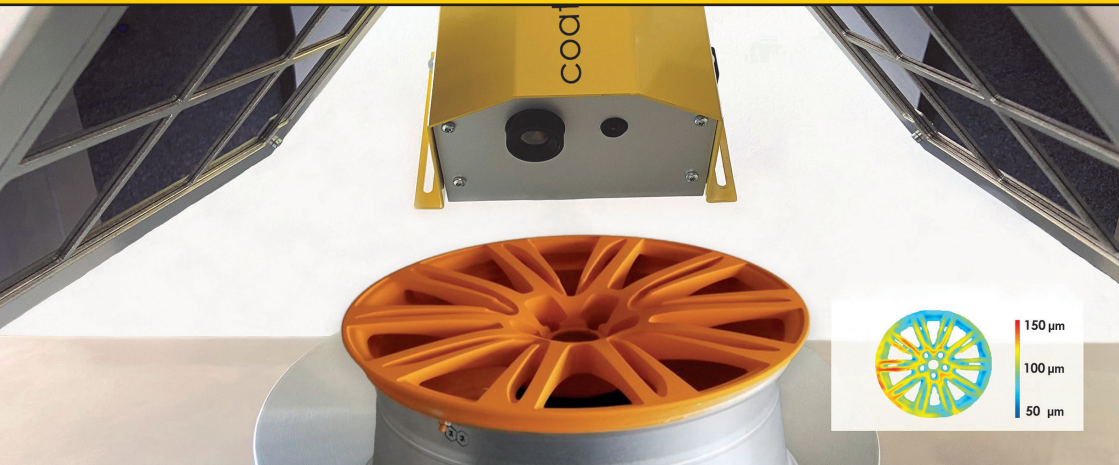


coatmaster

measure up. contactless.

coatmaster 3D Modular

Non-contact coating thickness distribution of large objects



Decrease setup time for your process.

Immediately find and correct uneven coating thickness distribution.



Save material.

Reduce your material consumption by up to 30%. This saves money and protects the environment.



Document continuously.

Document your coating process for you and your customers.

Technical data

Substrate: Metal

Powder coatings before curing	30 – 300 µm
Wet coatings before drying	20 – 300 µm
Cured powder coatings	30 – 1000 µm
Dried wet coatings	30 – 1000 µm
Measuring time	typ. 200 ms
Distance tolerance	10 – 120 cm
Tilt tolerance	± 70°
Measurement on moving and jiggling parts	yes
Relative standard deviation*	<5 %
Measuring area	scalable up to 2 m ²
Number of measuring point	up to 640 x 512
Works on all colors (incl. white)	yes
Real-time data access via ERP and Internet browser	yes
Dimensions Measuring Head Modular HxWxD	104 x 173 x 141 mm
Weight Measuring head Modular	1.5 kg

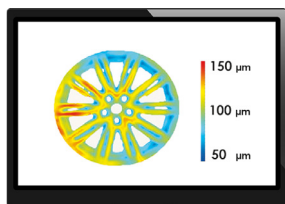
All information applies to a typical coating system and substrate.

The exact limits always depend on the physical properties of the coating material. Even if the parameters are within the specified ranges, certain combinations may not be achievable.

For an accurate assessment, please contact coatmaster AG.

Actual performance may vary, and specifications are subject to change without prior notice.

*60 µm powder coating before curing on aluminium, 5 cm working distance.



coatmaster AG

Flugplatzstrasse 5

CH-8404 Winterthur

Tel +41 52 212 02 77

info@coatmaster.com

www.coatmaster.com



Learn more

All information about thickness measurement with coatmaster